

Presented By:  
Lefoko Moagi

# Mining Cadastre In BOTSWANA

---

Landfolio User Conference - 10 February 2023

# Presentation Outline

---

01

## Overview of Ministry of Minerals and Energy

Responsibility, Role and Mandate.

02

## Botswana's Mining Cadastre implementation

Transformation from manual to digitalisation.

03

## Benefits attained from the Mining Cadastre

What prompted the project?

04

## System Efficiency

Status of system usage and efficiency.

05

## Mineral Potential of Botswana on a Global Perspective

Mineral occurrences and potential in Botswana

06

## Conclusion



# OVERVIEW OF MINISTRY OF MINERALS AND ENERGY

## Responsibility, Role and Mandate

- The Ministry of Minerals and Energy (MME) is a global leader in the provision of services in the mineral and energy sectors for national prosperity.

### Departments/Sections of the Ministry

- Department of Corporate Services
- Department of Mines
- Department of Energy
- Mineral Affairs Division
- Diamond Hub
- Projects & Energy Development Unit.

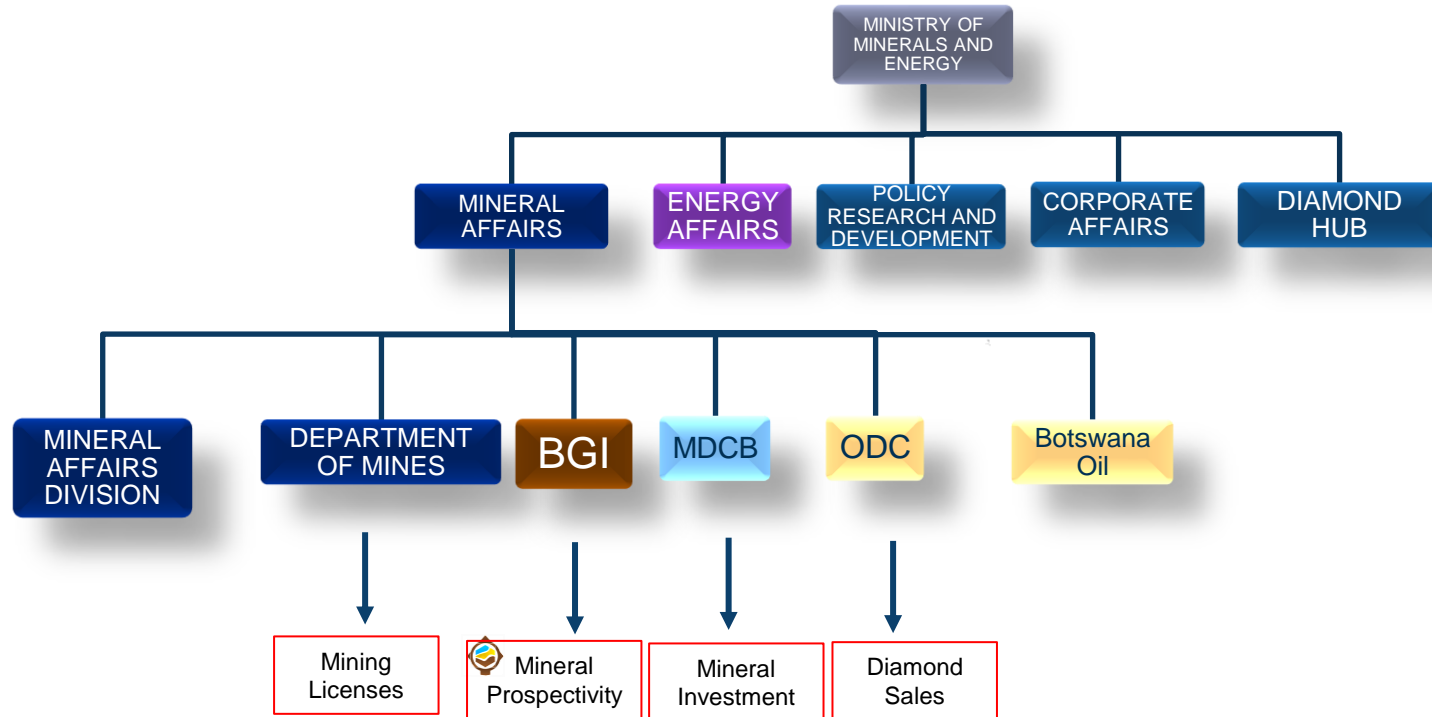
### Parastatals

- Botswana Power Corporation (**BPC**)
- Botswana Energy Regulatory Authority (**BERA**)
- Botswana Geoscience Institute (**BGI**)
- Okavango Diamond Company (Pty) Ltd. (**ODC**)
- Botswana Oil Limited. (**BOL**)
- Minerals Development Company Botswana (**MDCB**)





# MINISTRY OF MINERALS AND ENERGY (MME) STRUCTURE



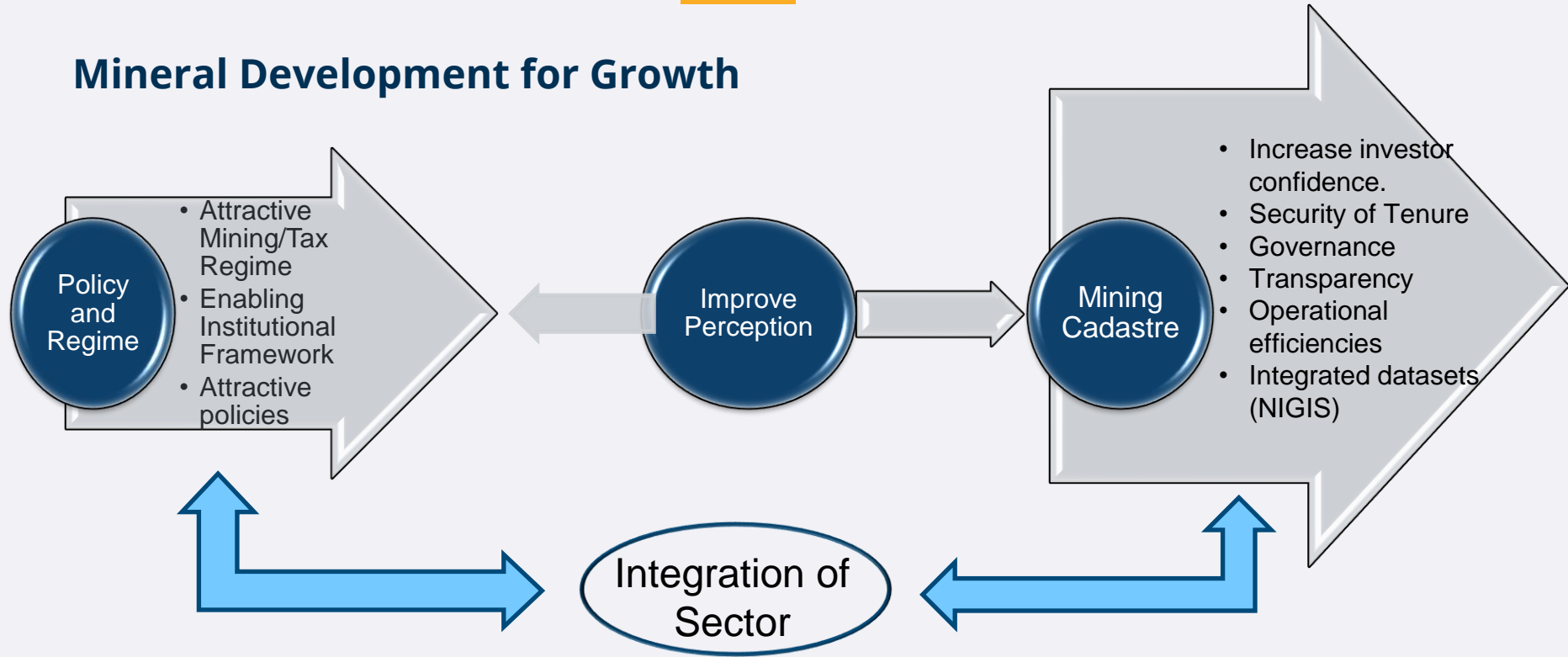


# BOTSWANA'S MINING CADASTRE IMPLEMENTATION

- This project was initiated as part of the Government Reset and Reclaim Agenda under **Priority 3, Digitalisation**, focusing on combining the delivery of government priorities to position the country to compete on a global scale.
- The mining sector is one of Botswana's biggest export earners and a key focus for government production, while simultaneously delivering a positive economic impact for its citizens.
- The government committed National Development Plan (NDP 11) to facilitate digitalisation in the country through implementation of the Mining Cadastre System.
- Implementation commenced in August 2021, completed in September 2022 and launched in October 2022.

# BENEFITS ATTAINED FROM THE MINING CADASTRE

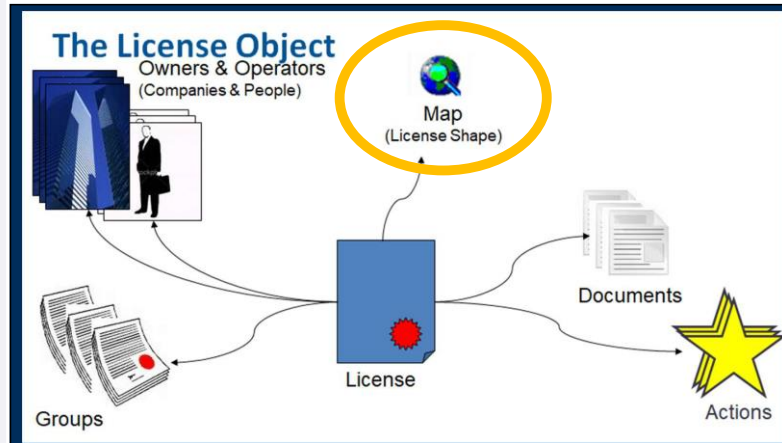
## Mineral Development for Growth



# BENEFITS ATTAINED FROM THE MINING CADASTRE

## Mineral Rights Security

- The system secures mineral rights, recording the geographical location, ownership and time validity of mining rights, monitoring and assuring compliance.
- Handles all the processes related to exploration and mining activities thereby enhancing efficiency and improving turnaround times = **One version of the truth.**



# SYSTEM EFFICIENCY


---

## Usage towards efficiency

- 1 A total of 1681 licenses have been uploaded into the system.
- 2 191 applications received, 156 companies and 58 individuals registered online.
- 3 System 24/7 accessible.
- 4 Hosted in a secure robust infrastructure to enable real time access.







# Welcome to the Botswana Mining Cadastre Portal

Your gateway to all mineral tenure services in Botswana

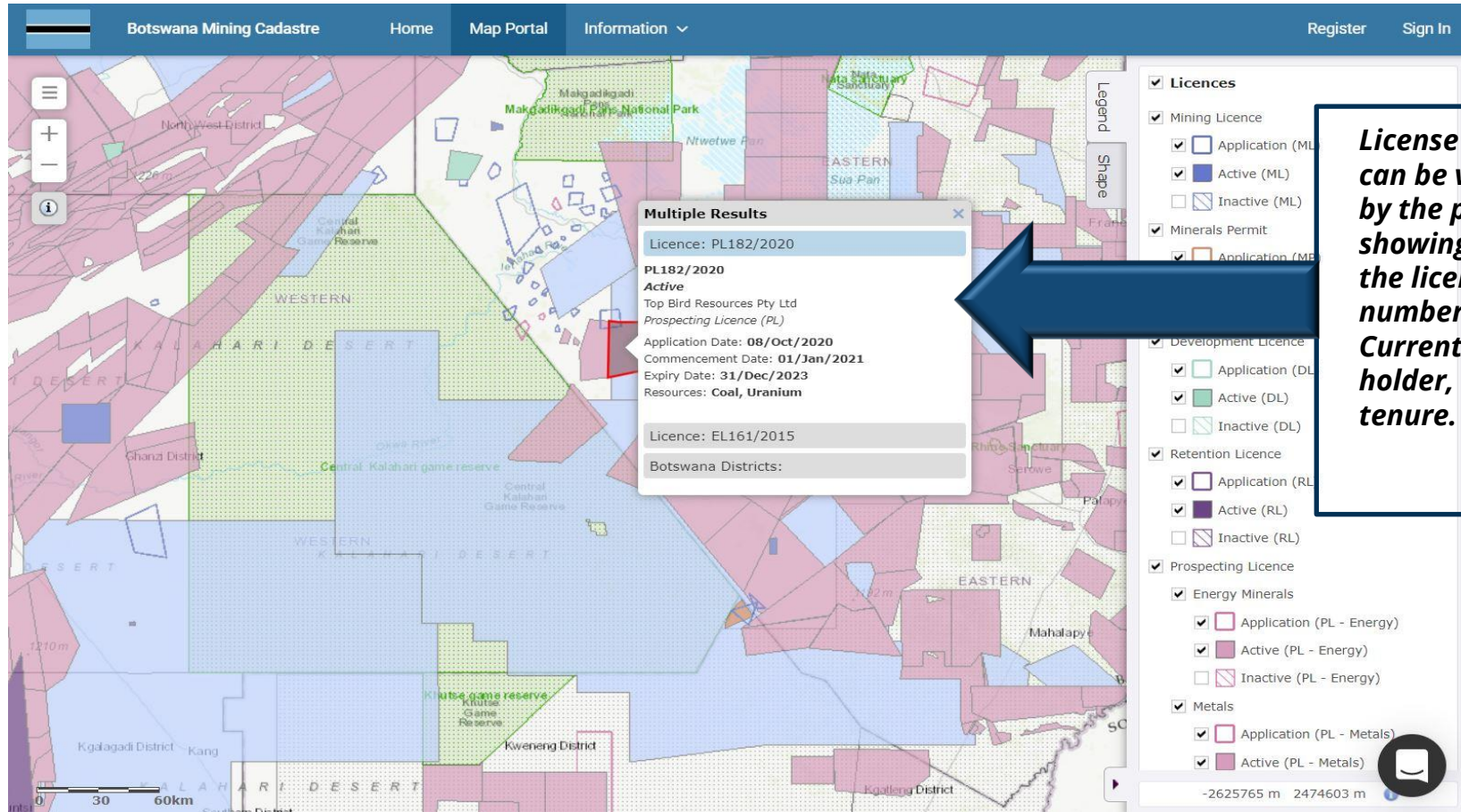
The goal of the Mining Cadastre Portal is to provide an electronic platform for all stakeholders in the mineral sector to engage directly with the Botswana Ministry of Mineral Resources, Green Technology and Energy Security (MMGE).

**Registered Users are able to:**

- View details and obligations for your existing Mineral Tenure and Explosives Services
- Submit applications for new licenses and permits
- Submit applications for renewal of existing licences and permits
- Submit reports, mineral discovery and mine closure notifications, and payments
- Apply for Licence Ownership Transfer, Relinquishment (Area), Extension (Area), Surrender and Work Program Amendment
- Access various other services

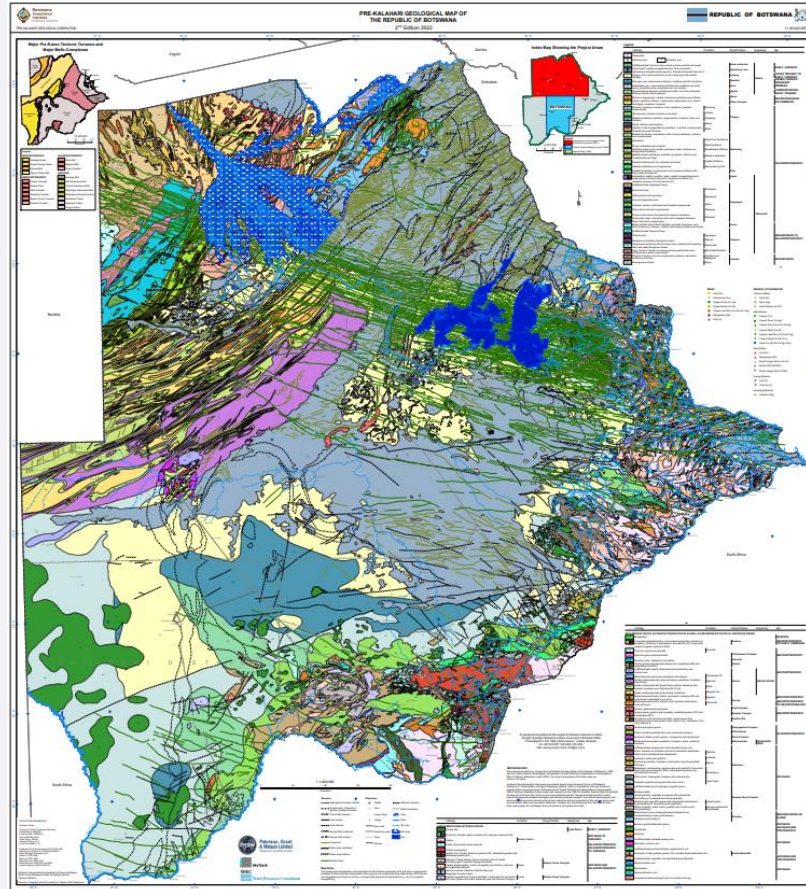


# MINING CADASTRE CONCESSION MAP



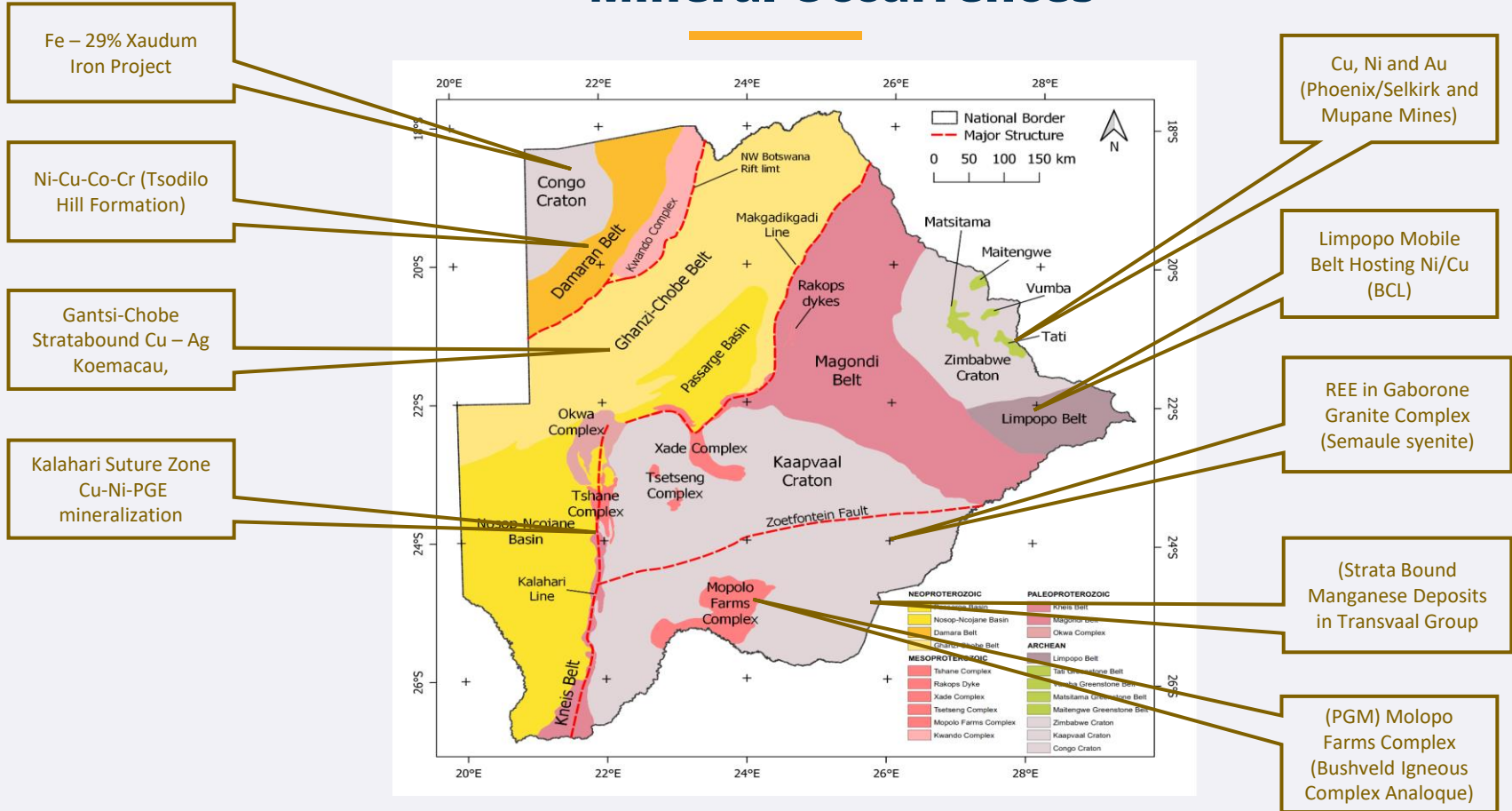
***License details can be viewed by the public showing: the license number, Current license holder, license tenure. Etc.***

# 2022 Updated National Geological Map





# Mineral Occurrences



# Conclusion

---

## Partnerships and Mineral Resource Diversification

- ❑ Significant portion of Botswana is unexplored.
- ❑ Botswana has abundant mineral prospects.
- ❑ The implementation of the Mining Cadastre systems aims to leverage on technology to facilitate prospecting and advance the nations economic value.
- ❑ The Mining Cadastre allows the investors to have an integrated view of data and opportunities available in the country.
- ❑ Government commits to create synergy of mineral data towards creating system sustainability and continuity in economic growth.



# Thank You

